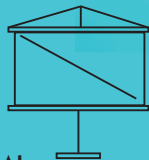


So, did you know you can **share all your pictures and videos from a tablet or smartphone** in large screen format with just this **small projector**?



34 MM

475 GRAMS



2.3 M OF DIAGONAL

LED TECHNOLOGY:  
UP TO 30,000 HOURS  
OF OPERATION

WXGA RESOLUTION  
UP TO 800 LUMENS  
A 30,000 : 1 CONTRAST RATIO  
HD 720P



NO CABLES

WIFI  
CONNECTION  
(USING EZCAST  
PRO APP)



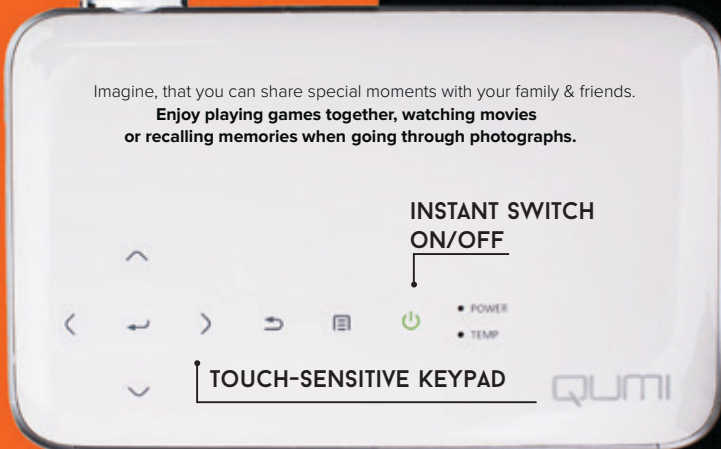
LAMP FREE



2.5 GB  
MEMORY



3 YEARS  
GUARANTEE



Imagine, that you can share special moments with your family & friends.

Enjoy playing games together, watching movies  
or recalling memories when going through photographs.

INSTANT SWITCH  
ON/OFF

• POWER  
• TEMP

TOUCH-SENSITIVE KEYPAD

QUMI

Which Qumi projector will match your needs?

- **Q4** – for home entertainment: **games and video**
- **Q5** – great for **portability**
- **Q6** – the new Qumi, & the best solution for **wireless connectivity** with Android & IOS mobile devices
- **Q7 Plus** – a **professional projector**, for a brighter picture



# SAY • SHOW • SHARE



WITH THE  
**QUMI**  
 HD POCKET PROJECTOR

Display Type	Quant 06	Quant 07 Plus	Quant 04	Quant 05
<b>Display Type</b>	DLP® Technology by Texas Instruments	DLP® Technology by Texas Instruments	DLP® Technology by Texas Instruments	DLP® Technology by Texas Instruments
<b>Light Source</b>	up to 800 Lumens LED	up to 1000 Lumens LED	30,000 Hours LED	30,000 Hours LED
<b>Brightness</b>	up to 800 Lumens	up to 1000 Lumens	30,000 Hours LED	30,000 Hours LED
<b>Native Resolution</b>	WXGA (1280 x 800)	WXGA (1280 x 800)	WXGA (1280 x 800)	WXGA (1280 x 800)
<b>Max. Resolution</b>	WXGA (1600 x 1200)	WXGA (1600 x 1200)	WXGA (1600 x 1200)	WXGA (1600 x 1200)
<b>Contrast Ratio</b>	30,000:1	30,000:1	30,000:1	30,000:1
<b>Throw Ratio</b>	1.55:1	1.30-1.43:1	1.55:1	1.55:1
<b>Image Size (Diagonal)</b>	30" - 90"	30" - 90"	30" - 90"	30" - 90"
<b>Projection Distance</b>	1.3m	0.8 - 3m	1.3m	1.3m
<b>Speakers</b>	2W x 1	2W x 1	2W x 1	2W x 1
<b>Zoom Ratio</b>	1x	1x	F1.9 / f=15.3	F1.9 / f=15.3
<b>Projection Lens</b>	F1.9 / f=15.3	F1.9 / f=15.3	F1.9 / f=15.3	F1.9 / f=15.3
<b>Offset</b>	Vertical + 33° / 45°	Vertical + 33° / 45°	Vertical + 33° / 45°	Vertical + 33° / 45°
<b>Keystone Correction</b>	Vertical + 33° / 45°	Vertical + 33° / 45°	Vertical + 33° / 45°	Vertical + 33° / 45°
<b>I/O Connection Ports</b>	HDMI x2 (HDMI/MHL x1), Audio-Out (Mini-Jack), USB type A	HDMI x2 (HDMI/MHL x1), HDMI x1, VGA-In, D-Sub 15pin, Composite Video, Audio-In	HDMI (HDMI/MHL x1), VGA Adapter 24pin	HDMI (HDMI/MHL x1), Audio-Out (Mini-Jack), USB type A
<b>Wireless</b>	Yes (Integrated)	Yes (Using Wi-Fi dongle)	No	Yes (Using Wi-Fi dongle)
<b>PC File supported file formats</b>	Document: Microsoft® Office (Word, Excel®, PowerPoint® w/o animation); PDF, TXT	Document: Microsoft® Office (Word, Excel®, PowerPoint® w/o animation); PDF, TXT	Document: Microsoft® Office (Word, Excel®, PowerPoint® w/o animation); PDF, TXT	Document: Microsoft® Office (Word, Excel®, PowerPoint® w/o animation); PDF, TXT
<b>Signal Compatibility</b>	SDTV (480i, 576i), EDTV (480p, 576p), HDTV (720p, 1080i/p), NTSC (M, 3.58/4.43 MHz), PAL(B/D/G/H/I/M/N/60), SECAM(B, D, G, K, I)	SDTV (480i, 576i), EDTV (480p, 576p), HDTV (720p, 1080i/p), NTSC (M, 3.58/4.43 MHz), PAL(B/D/G/H/I/M/N/60), SECAM(B, D, G, K, I)	SDTV (480i, 576i), EDTV (480p, 576p), HDTV (720p, 1080i/p), NTSC (M, 3.58/4.43 MHz), PAL(B/D/G/H/I/M/N/60), SECAM(B, D, G, K, I)	SDTV (480i, 576i), EDTV (480p, 576p), HDTV (720p, 1080i/p), NTSC (M, 3.58/4.43 MHz), PAL(B/D/G/H/I/M/N/60), SECAM(B, D, G, K, I)
<b>3D Compatibility</b>	Yes	Yes	Yes	Yes
<b>Dimensions (W x D x H)</b>	165 x 102.4 x 34 mm	160 x 102.4 x 32.3 mm	160 x 102.4 x 32.3 mm	160 x 102.4 x 32.3 mm
<b>Weight</b>	475 g	460 g	460 g	475 g
<b>Noise Level</b>	34dB / 30dB (Normal/ Eco)	36dB / 28dB (Normal/ Eco)	36dB / 28dB (Normal/ Eco)	34dB / 30dB (Normal/ Eco)
<b>Power</b>	Supply: AC 100-240V, 50/60Hz Consumption: 52W (Normal/ Eco), <0.5W (Standby Mode)	Supply: AC 100-240V, 50/60Hz Consumption: 52W (Normal/ Eco), <0.5W (Standby Mode)	Supply: AC 100-240V, 50/60Hz Consumption: 52W (Normal/ Eco), <0.5W (Standby Mode)	Supply: AC 100-240V, 50/60Hz Consumption: 52W (Normal/ Eco), <0.5W (Standby Mode)
<b>Available Colours</b>	Black, White, Light Blue, Red, Orange, Gold	Black, White, Red	White	Black, White
<b>Warranty</b>	3 Years Warranty/5 Years Education	2 Years Warranty	3 Years Warranty	3 Years Warranty



www.myqumi.eu

© Copyright 2015 Vivitek. Vivitek is a registered trademark of Delta Electronics, Inc. DLP® and the DLP logo are registered trademarks of Texas Instruments. All specifications are subject to change at any time. 10/15/11/EMEA/B2C